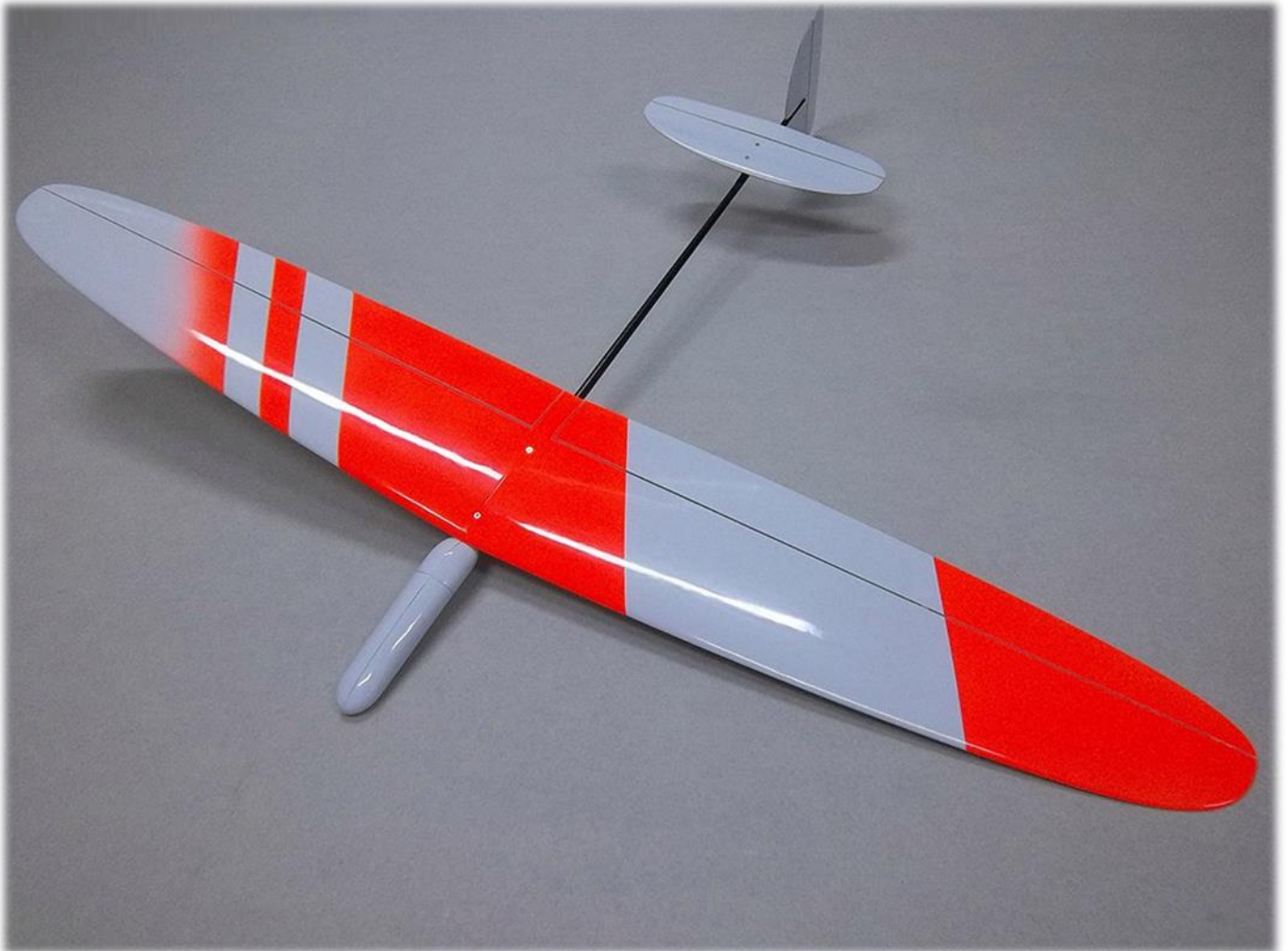


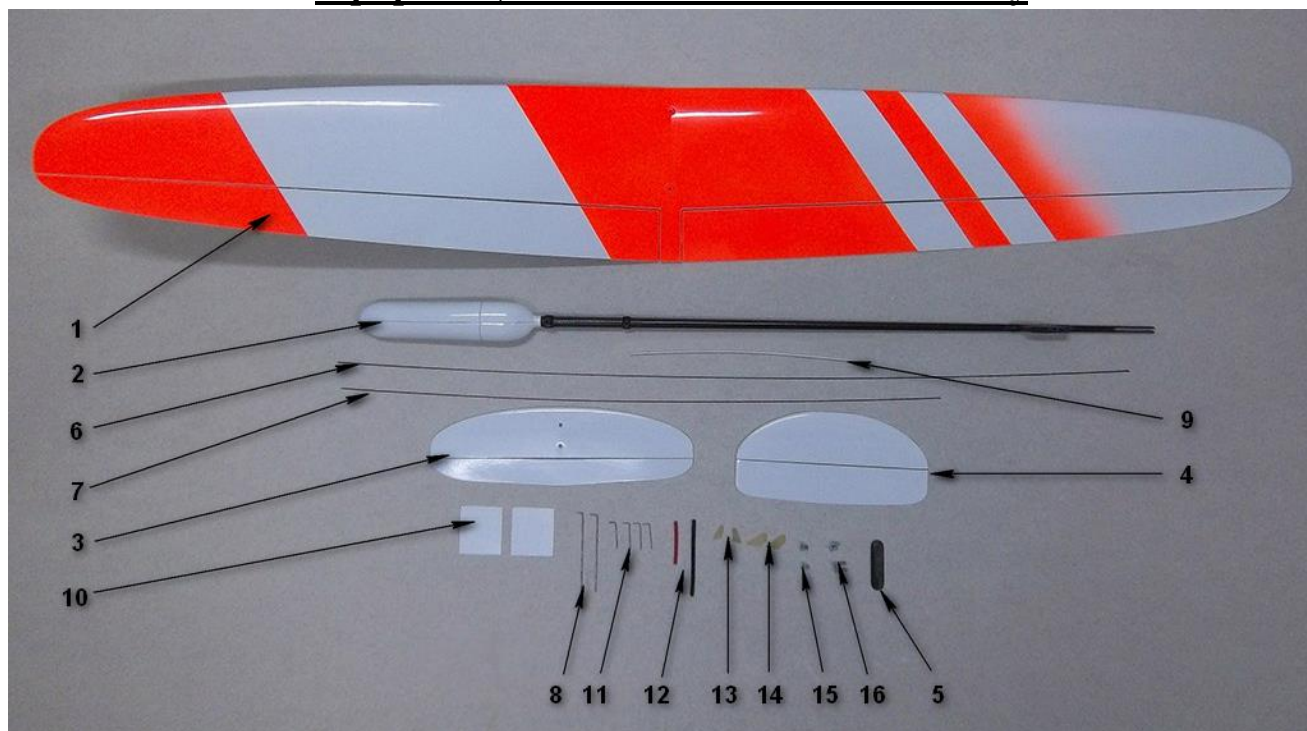
Mini Dart

Assembly instruction



1. Equipment, materials and tools for assembly.....	2
2. Assembly.....	3
3. Setting of the model.....	11

1. Equipment, materials and tools for assembly



Picture 1.1. Supply kit

- | | |
|--|---|
| 1 – Wing; | 11 – Rod tips (4 pieces); |
| 2 – Fuselage; | 12 – Thermal shrinkage; |
| 3 – Stabilizer; | 13 – Plumage pylons (2 pieces); |
| 4 – Keel; | 14 – Aileron pylons (2 pieces); |
| 5 – Dowel for throwing; | 15 – Screws for mounting of the stabilizer M2*6 (2 pieces + 2 spare ones) |
| 6 – Rudder rod; | 16 – Screws for mounting of the wing M2,5*8 и M2,5*10 (1 spare set) |
| 7 – Elevating rudder rod; | |
| 8 – Aileron rod (2 pieces); | |
| 9 – Bowden tube; | |
| 10 – Hatches of the aileron machines (2 pieces); | |

Materials and tools for the installation of the model:



- 1) Liquid superglue (Akfix 702);
- 2) Superglue activator;
- 3) Epoxy;
- 4) Masking tape;
- 5) Sandpaper №240-320;
- 6) Drills Ø2, Ø5;
- 7) Needle file (round and flat);
- 8) Pliers;
- 9) Screwdriver;
- 10) Ruler;
- 11) Stationery knife;
- 12) Pencil.

Picture 1.2. Materials and tools

Necessary radio equipment for the assembly:

- 1) Accumulator 250-300 mAh, recommended sizes 17*30 mm;
- 2) Servo-drivers Power HD 1440 or Dymond D-47 (4 pieces);
- 3) 4...8-channel receiver.

2. Assembly

2.1. Insert of pylons

Cut the grooves for the pylons with a knife as it is shown in the pictures 2.1-2.4

In the rudder in the right in the middle

In the elevating rudder at the distance of 103 mm from the left edge

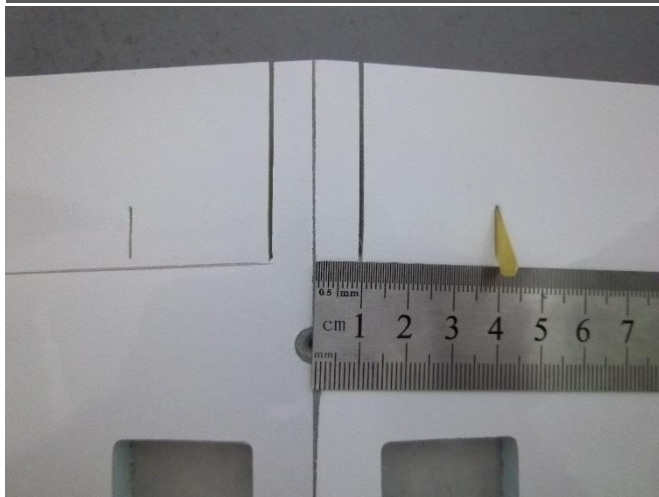
In ailerons at the distance of 39-40 mm from the centre of the wing

Paste in the pylons using the epoxy.

Avoid contact of the superglue with the foam plastic of the wing and the plumage cores!



Picture 2.1. Pasting in the pylon of the rudder



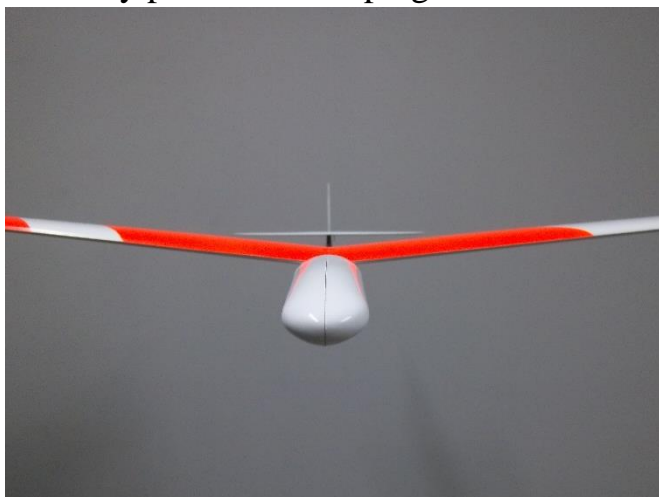
Picture 2.2. Pasting in the pylons of the ailerons



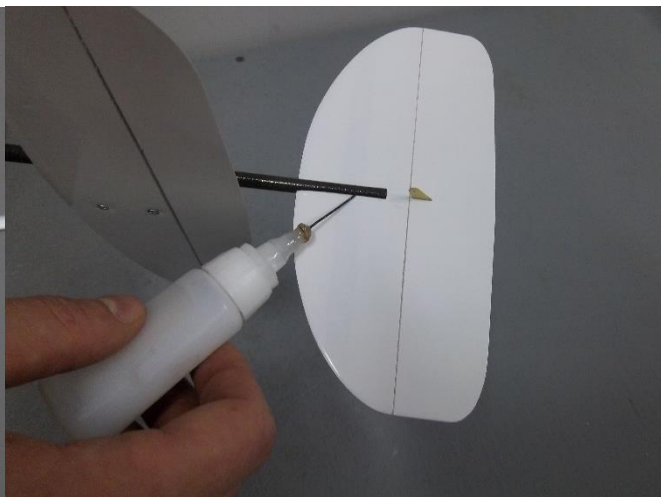
Picture 2.3. Pasting in the pylons of the elevating rudder

2.2.Pasting in the keel

Set up the wing and the stabilizer, insert the keel into the groove, set it vertically and carefully pour it with superglue.



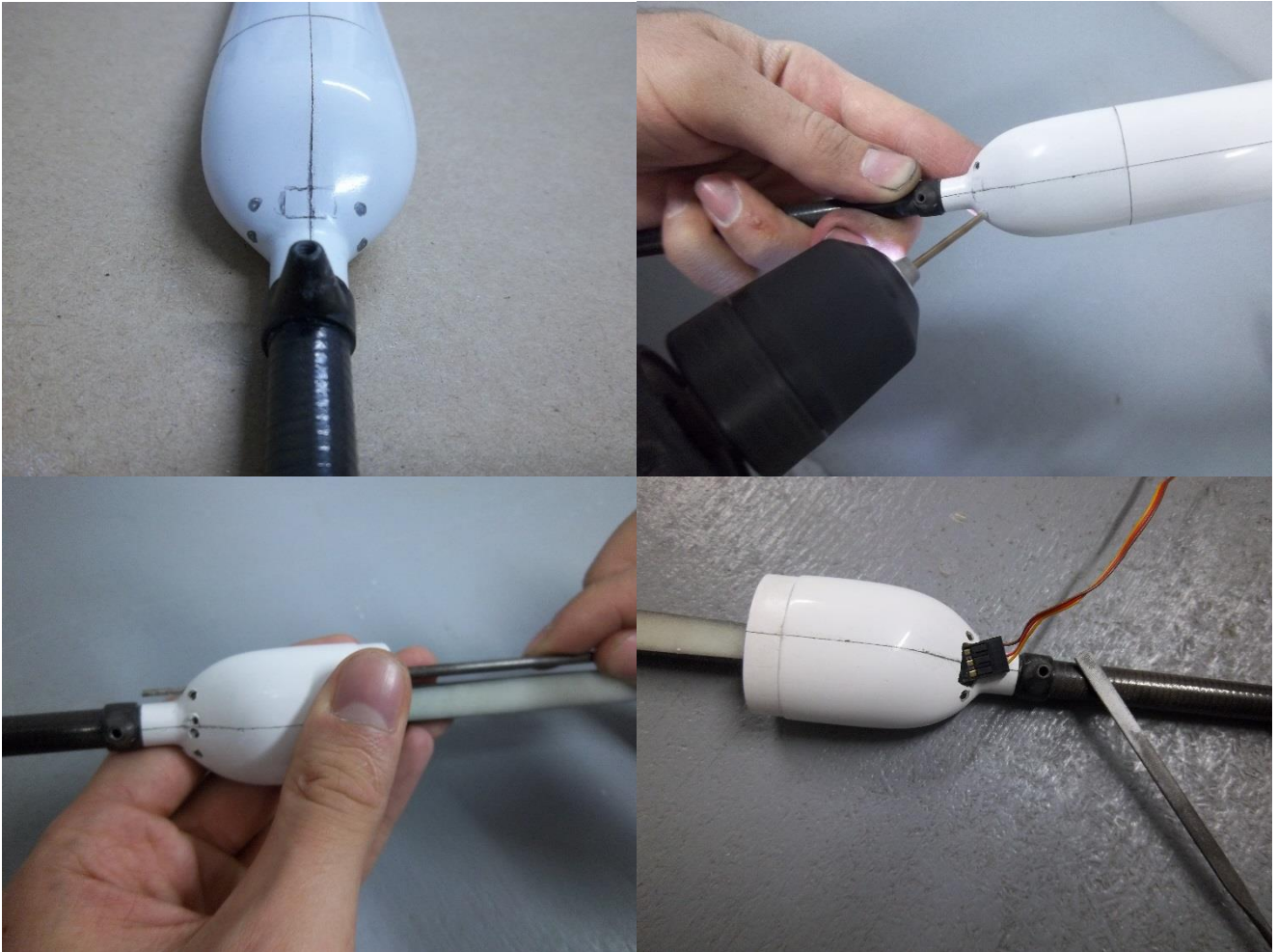
Picture 2.3. Installing the keel



Picture 2.4. Pasting in the keel

2.3.Installing machines and plumage rods

Mark out the holes for Bowden tubes, transmitter antennas and wires of the aileron machines with a pencil, drill with a $\varnothing 2$ -mm drill and finish with a needle file.



Picture 2.5. Rework of the nozzle

Glue the tip to one of the ends of the carbon fiber rods, put on the thermal shrinkage and heat shrink.



Picture 2.6. Pasting in the rod tip.

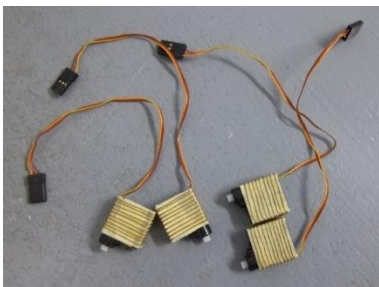
Mini Dart

Assembly instruction.....[SoaringModels](#)

Cut off two 60-mm-long tubes, glue them like in the picture 2.7, glue the other 5-mm-long ones with superglue to the beam with the pace of 50-60 mm

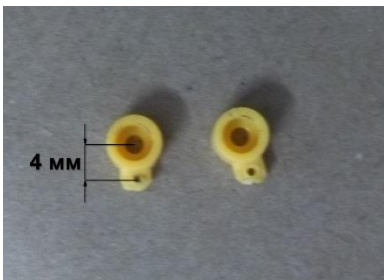


Picture 2.7. Pasting in the Bowden tubes



Cut off the eyelets on machines, wrap them with masking tape and, if possible, with thin strong thread.

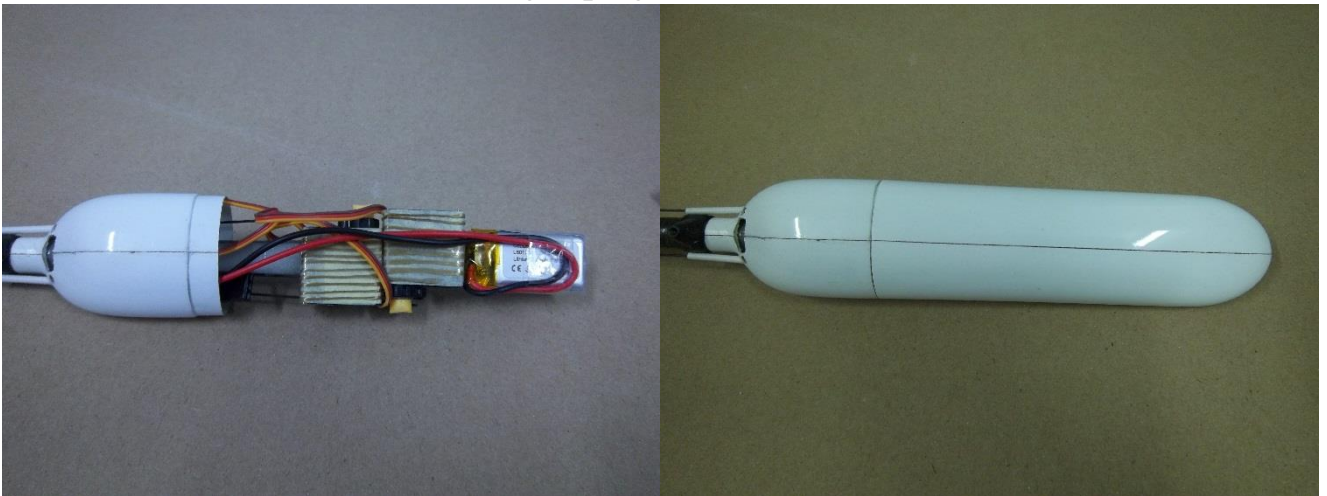
Picture 2.8. Preparation for the machine installation



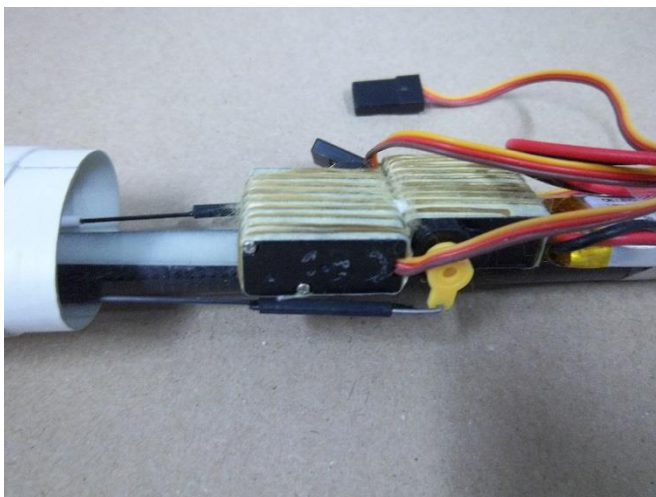
Finish the rockers of the plumage machines in such a way that a shoulder is 4...6 mm long

Picture 2.9. Plumage rockers

Temporarily glue 2 machines and an accumulator with tape to the beam in the most forward position. Make sure the cap can be put on and machine rockers don't touch it. Glue the machines to the beam using superglue.



Picture 2.10. Installing the machines and the accumulator



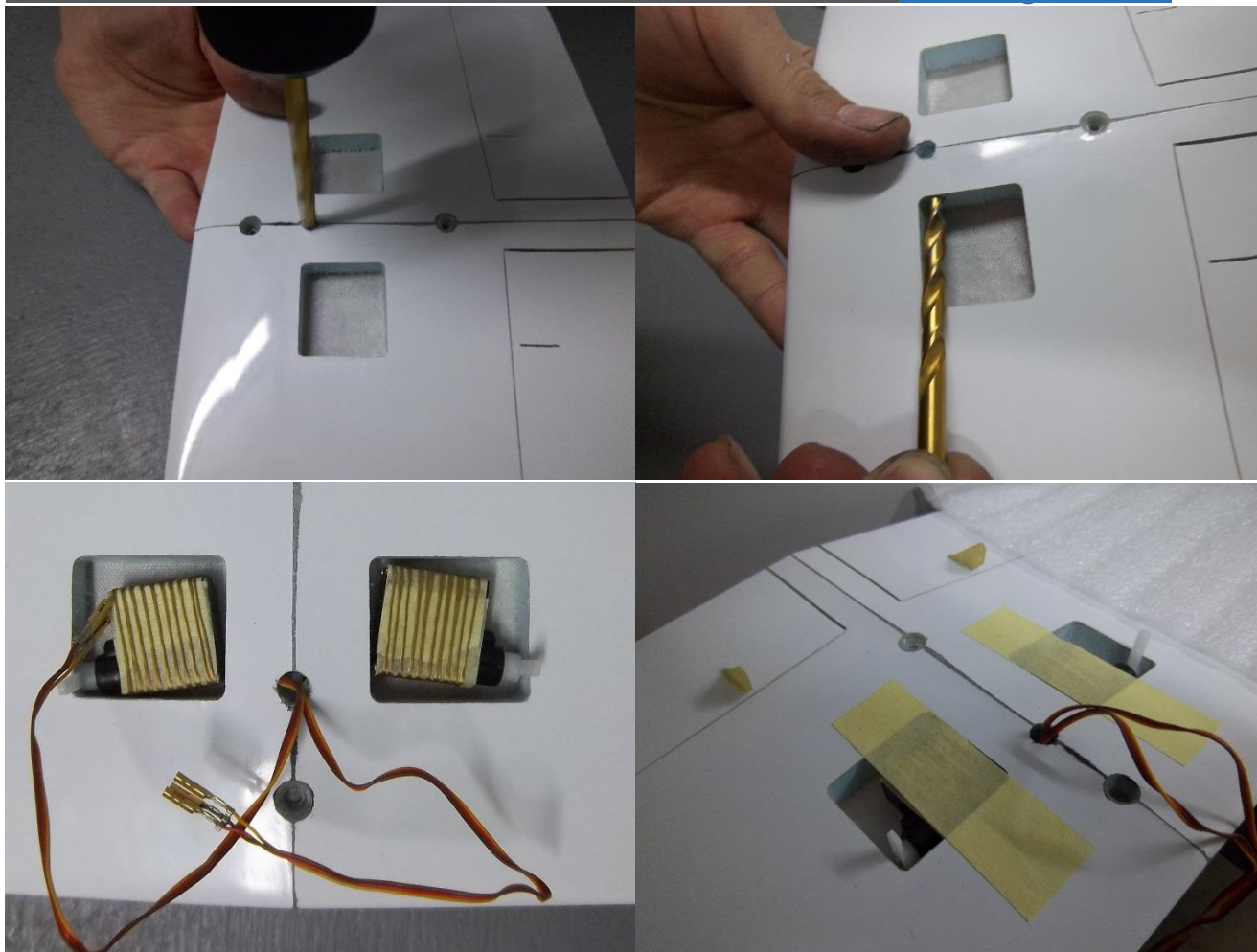
Insert the rods into the Bowden and glue the second set of tips, having set the average position of the machines and the rudders.

Picture 2.11. Installing the plumage rods

2.4. Installing the aileron machines

Drill a hole for the wires of the machines with a Ø5-6 mm drill. Take off the plastic cases of the connectors to pass the wires through the holes, glue the machines using epoxy.

Don't forget to set up the rocker in the right position and tighten the screw beforehand!



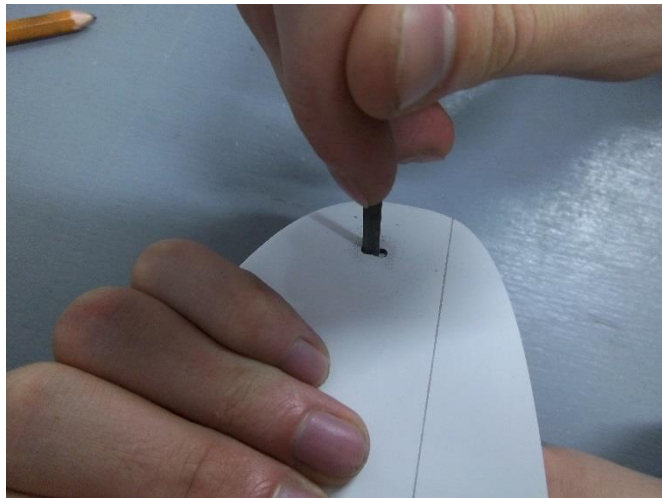
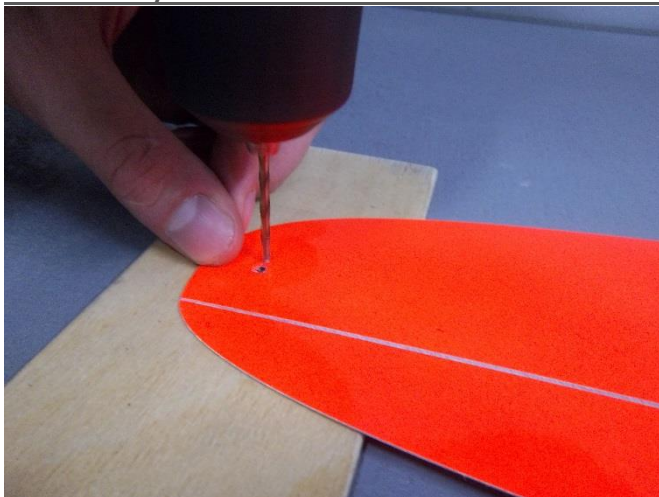
Picture 2.12. Installing the aileron machines.

2.5. Inserting the dowel for throwing

Round the dowel with sandpaper until the shape is comfortable for you to use



Picture 2.13. Dowel for throwing

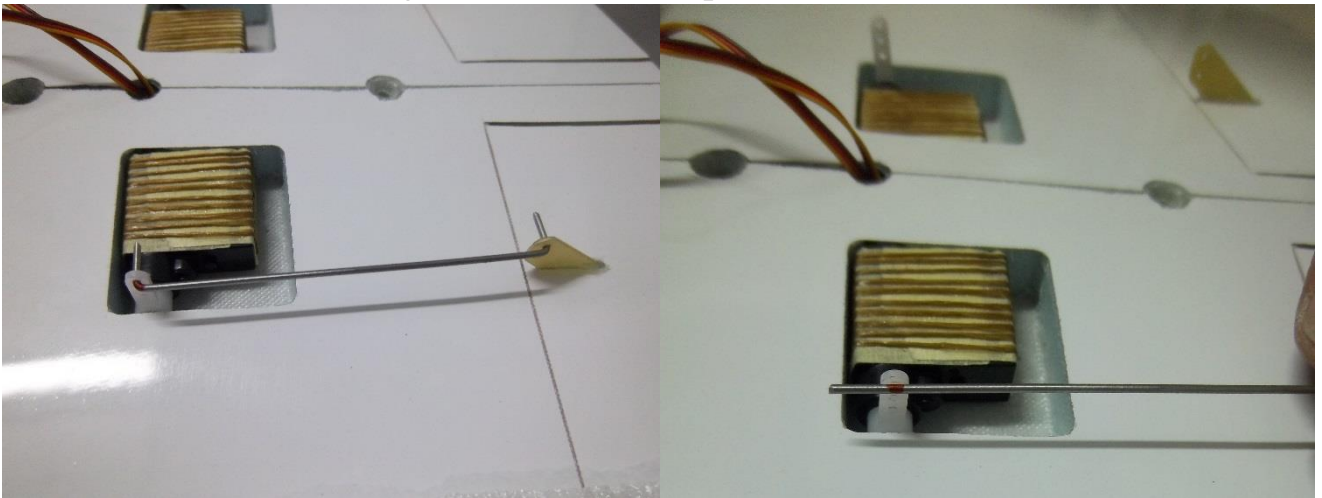


Picture 2.14. Inserting the dowel for throwing.

At the distance of 15 mm from the wingtip drill a hole for the dowel and then finish it with a needle file. Spread the holes inside with epoxy, insert the dowel and form a rounding as it is shown in the picture.

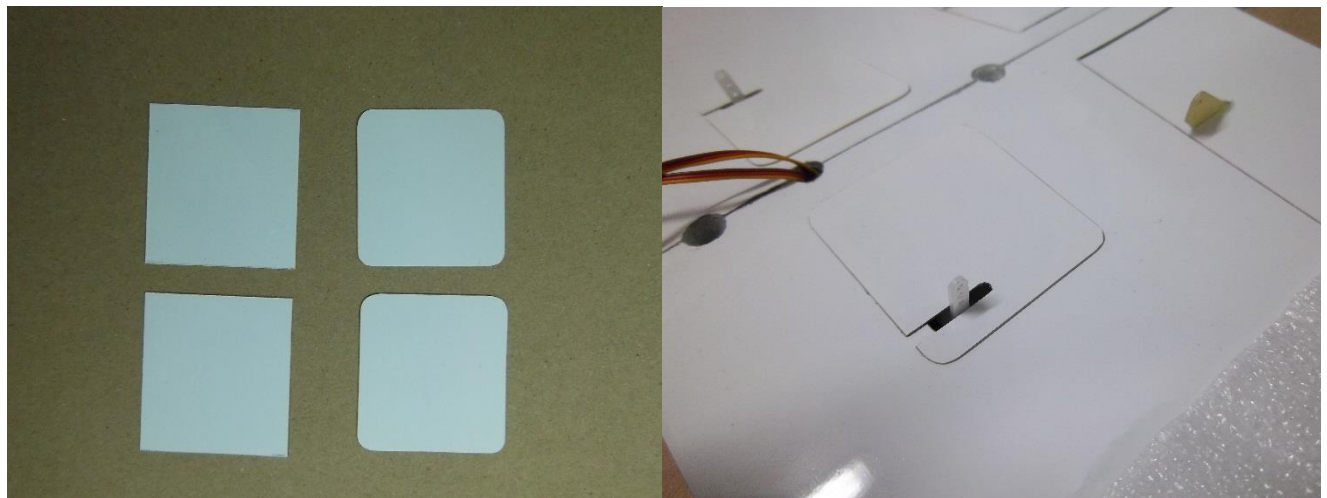
2.6. Installation of the aileron rods

Insert the rod into the pylon, denote the position of the hole of the machine rocker with a marker, bend the edges of the rods with pliers.



Picture 2.15. Installation of the aileron rods

2.7. Installation of the aileron machine covers



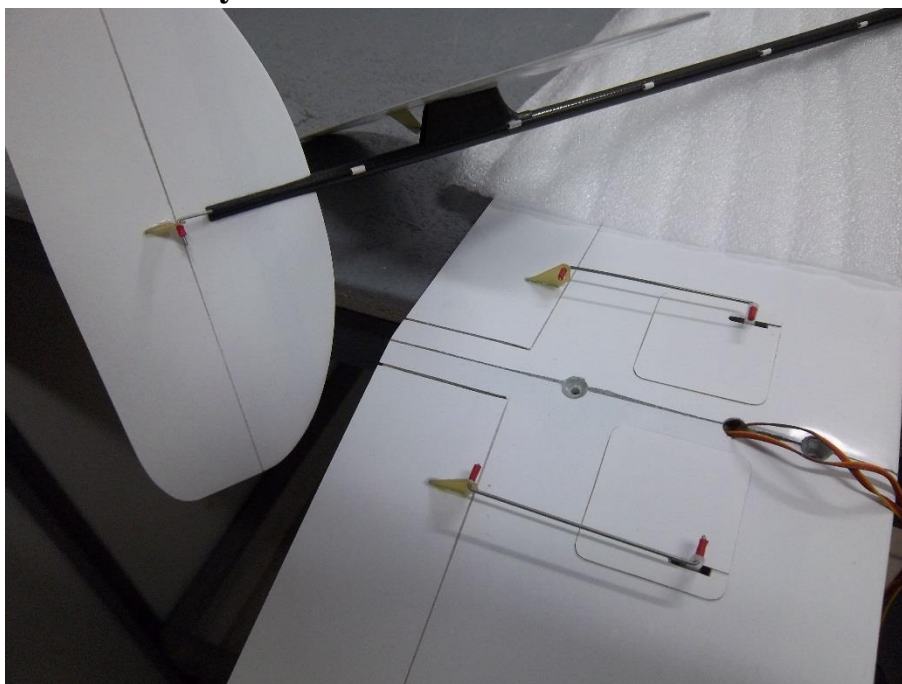
Picture 2.16. Installation of the aileron machine covers

Round the cover angles with sandpaper.

Cut through the groove for the rocker with a knife and finish it off with the needle file.

Glue the covers on the double-sided tape.

2.8. Final assembly



Fix the rods in the pylons by the pieces of the thermal shrinkage (except the elevating rudder rod)

Picture 2.17. Fixation of the rods in the pylons

Stretch the wires of the aileron machines out through the hole in the nozzle and attach the wing with the screws

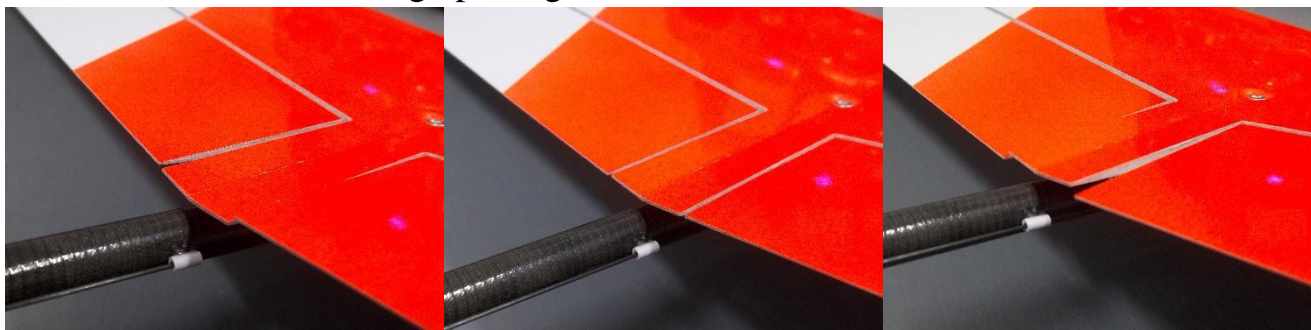


Picture 2.18. Wing installation

3. Setting of the model

Set up the receiver and establish the alignment at the distance of 50-60 mm from the front edge.

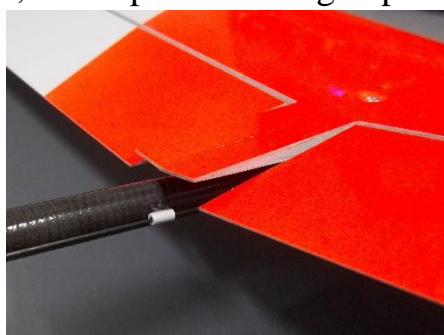
We recommend setting up 5 flight modes on the transmitter



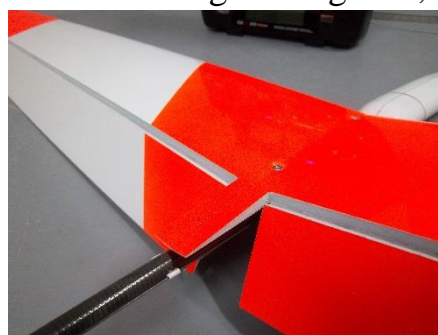
Starting - 0,5mm up

High-speed - 0

Regular flight - 1,5mm down



Thermal – 3mm down



Deceleration maximally down